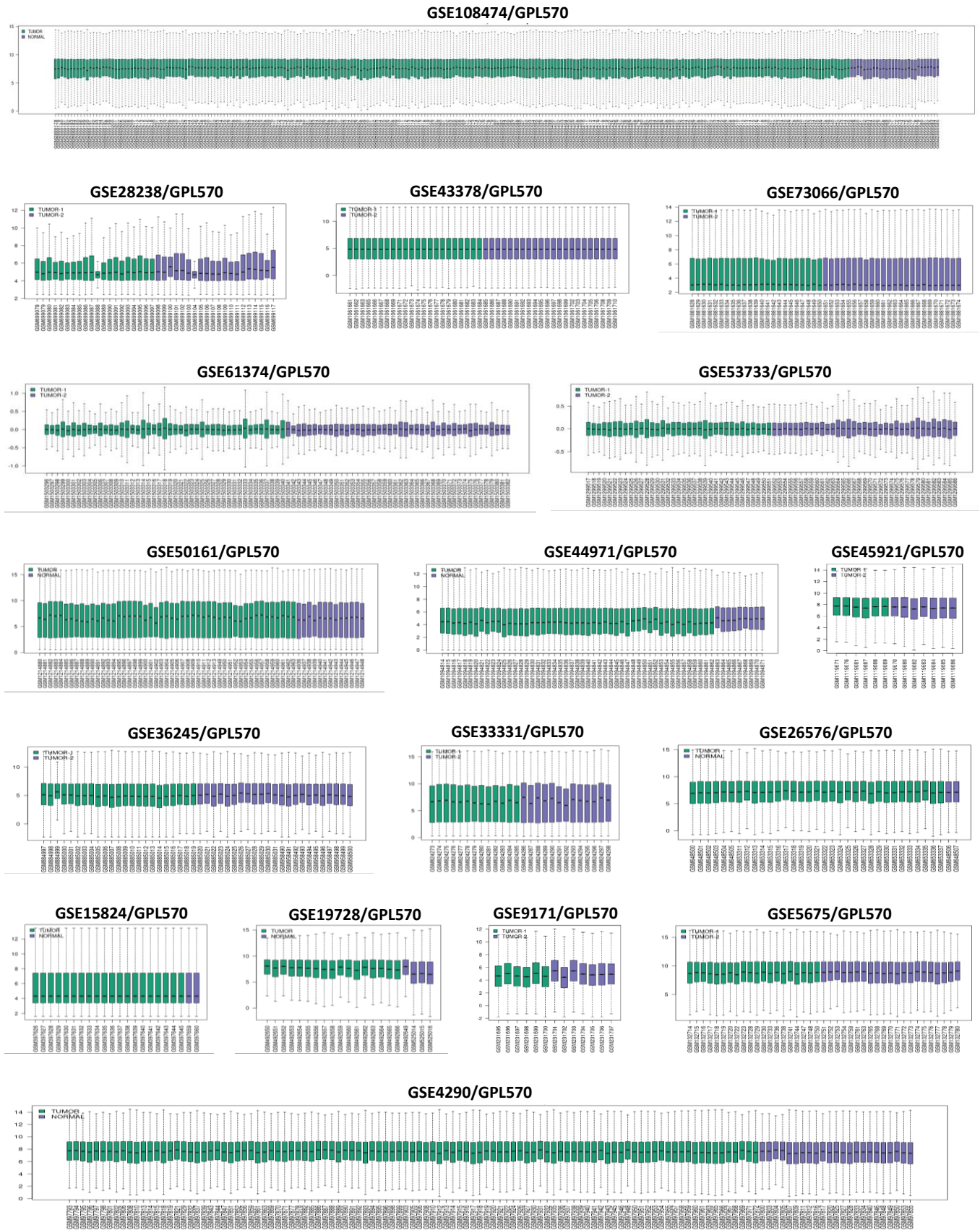
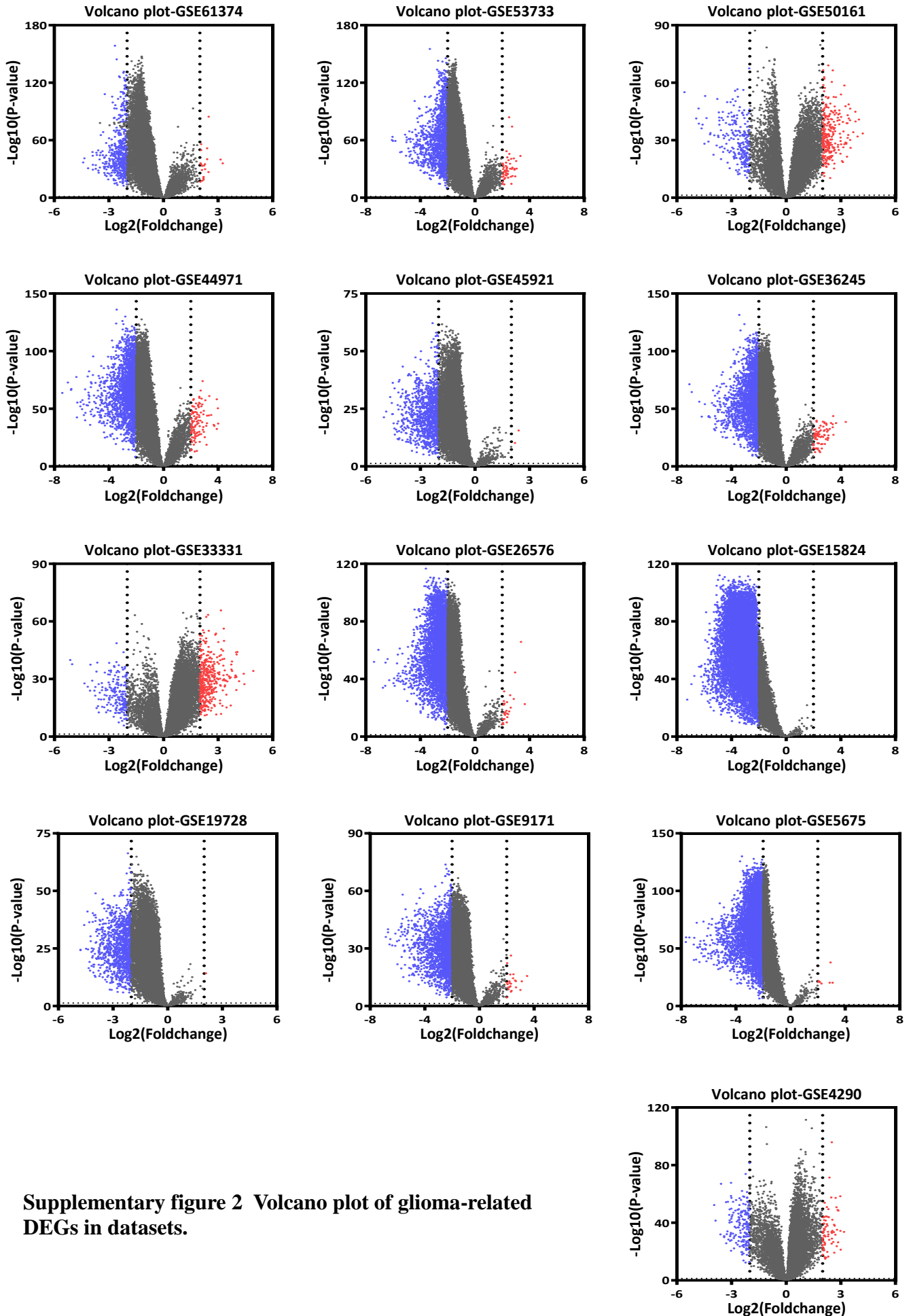


# Supplementary figure 1

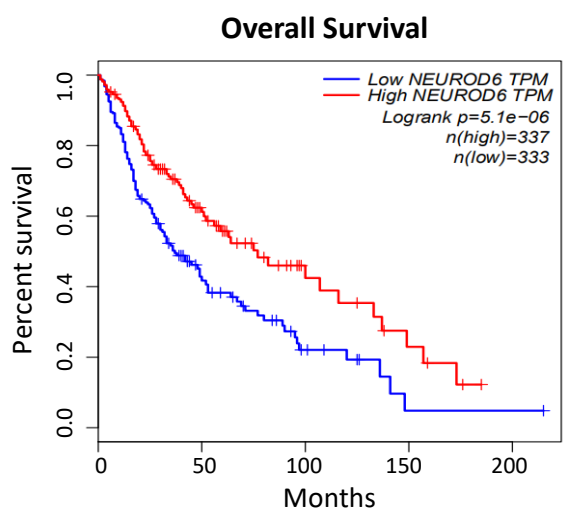
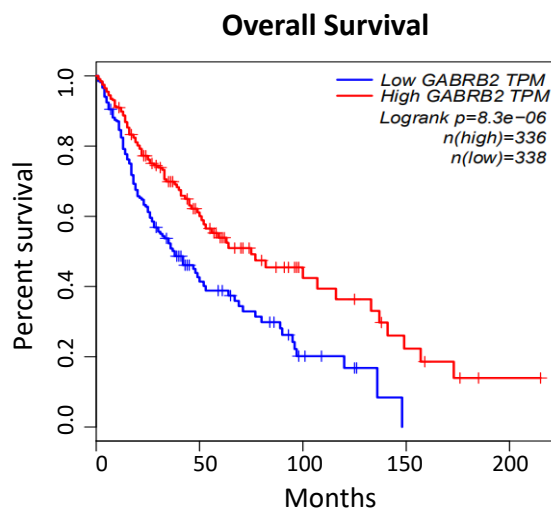
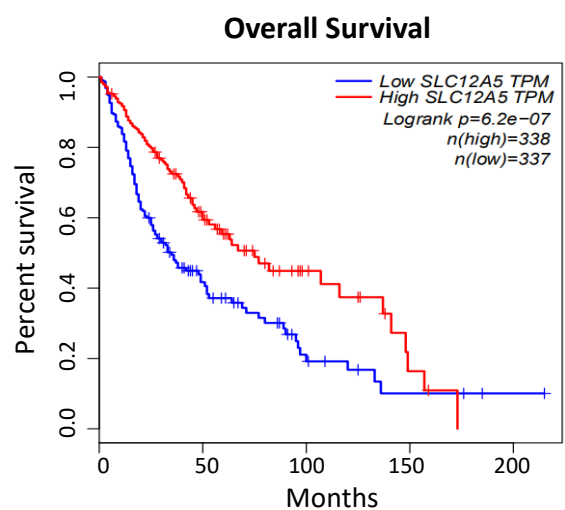
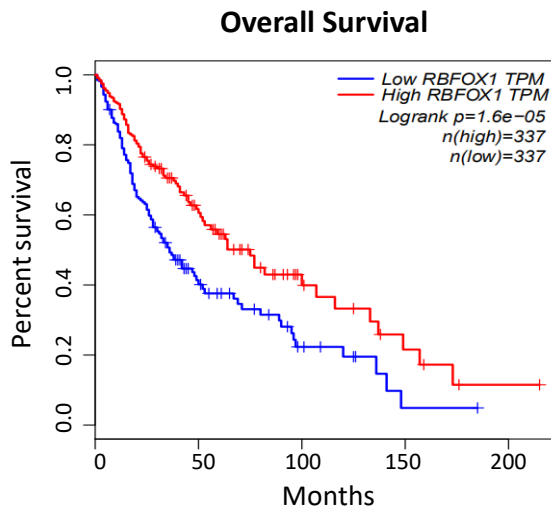
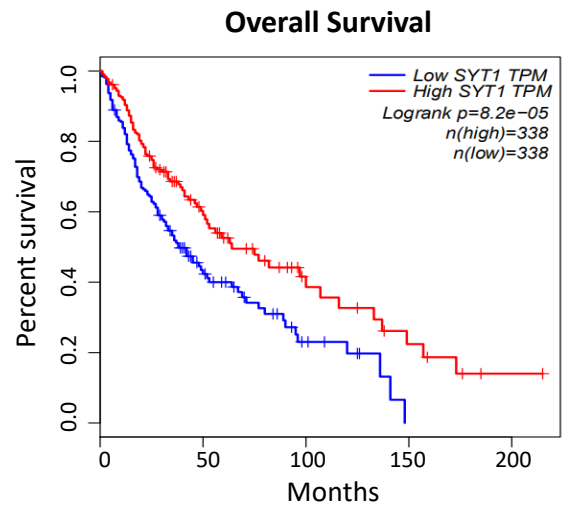
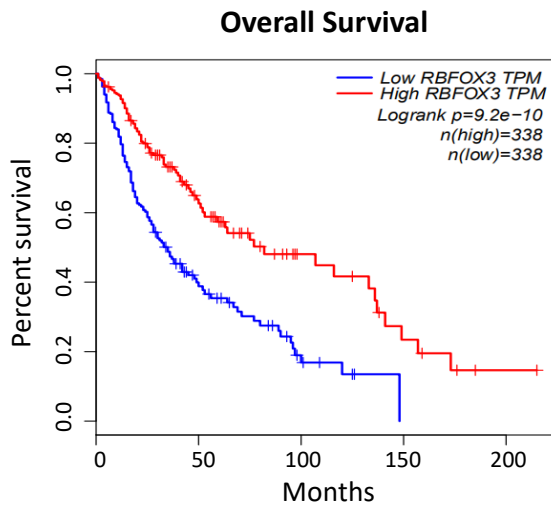


Supplementary figure 1 Data quality assessment of all samples in 17 GSE datasets.

# Supplementary figure 2

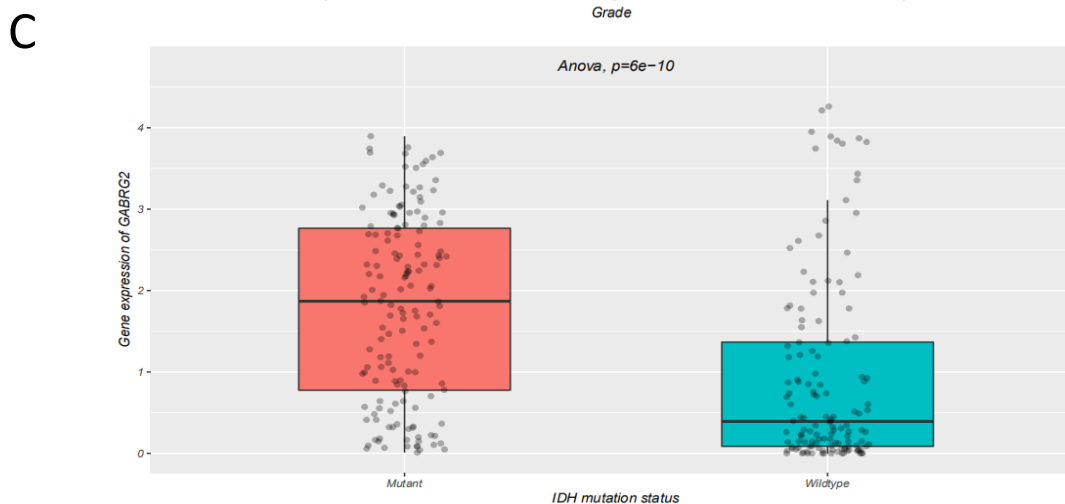
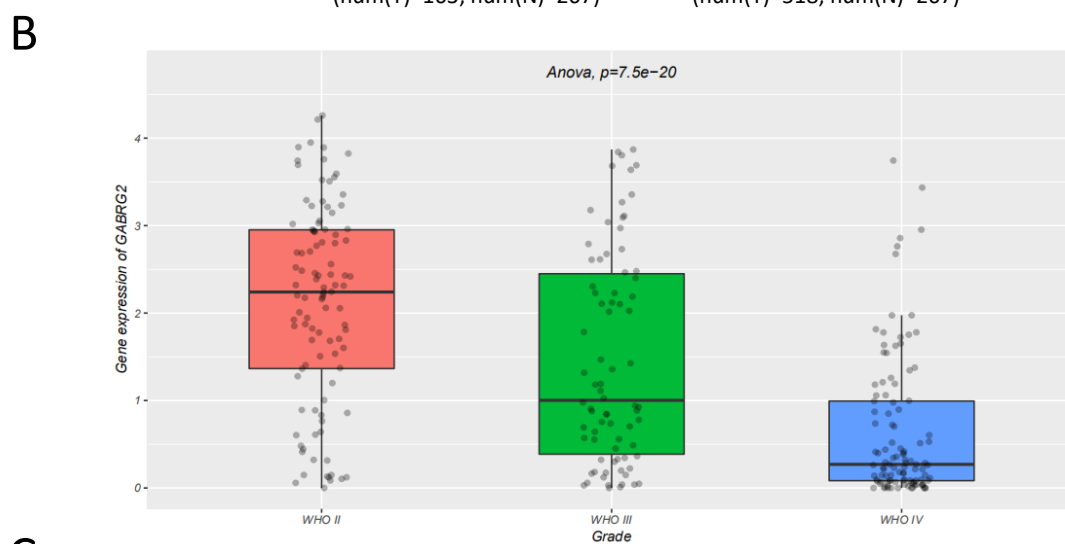
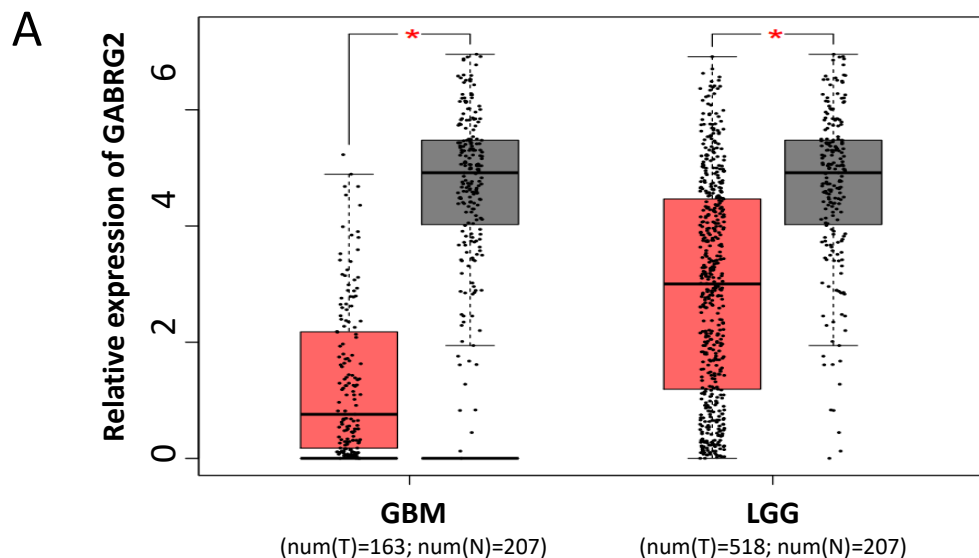


# Supplementary figure 3



Supplementary figure 3 Prognosis of other hub genes in glioma.

# Supplementary figure 4



## Supplementary figure 4 Relative expression level of GABRG2 in different type of glioma.

(A) Result of GEPIA database showed that GABRG2 expression was significantly downregulated in glioma tissues compared with normal brain tissues. (B) Result of CGGA database demonstrated that decreased level of GABRG2 was significantly correlated with advanced grade in glioma patients. (C) Result of CGGA database illustrated that GABRG2 expression was associated with glioma biological subtype-IDH status.  $P < 0.05$  was considered as statistically significant.